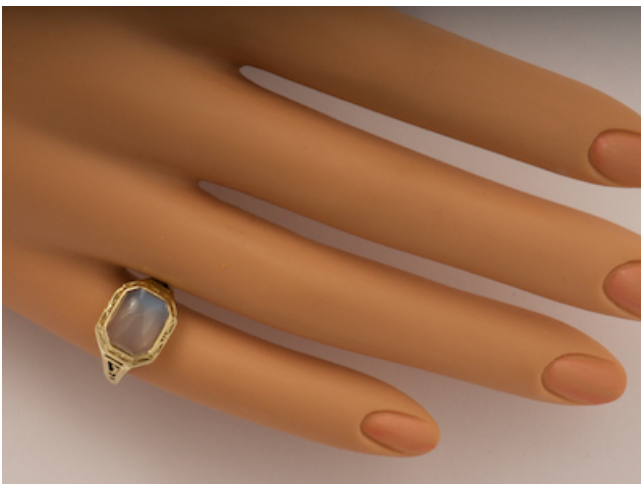


TOPAZERY

Arts and Crafts Moonstone Antique Ring, RG-3719

The moonstone of this Arts and Crafts antique ring mesmerizes like ocean waves. The gemstone is East-West set to draw even more attention to the finger. A Greek key design decorates the handwrought band. Details: Antique, Arts and Crafts. Circa 1890 to 1910. 14k yellow gold. Moonstone; 1.56 carats.



Options	None
Item #	rg3719
Metal	14k yellow gold
Circa	1890 to 1910
Weight in grams	2.80
Period or Style	Greek Key Arts and Crafts
Special characteristics	This hand-wrought Arts and Crafts ring features a 1.56 carat Moonstone set in a hand-wrought 14k yellow gold mounting.
Condition	Good
Gemstone name	Fieldspar (Moonstone)
Gemstone cut or shape	Octagon
Gemstone carat weight	1.56
Gemstone mm measurements	10.0 x 8.0 x 2.76
Gemstone hue	milky blue white
Gemstone tone	1-2
Gemstone saturation	1
Gemstone comments	One corner of this stone is chipped along the girdle into the crown.
Top of ring length (N-S)	11.01 mm [0.43 in]
Top of ring width (E-W)	13.7 mm [0.53 in]
Width of shank at shoulders	4.85 mm [0.19 in]
Width of shank at base	1.27 mm [0.05 in]
Ring height above finger	5.40 mm [0.21 in]
Ring Size	4.0

Important Jewelry Information

Each antique and vintage jewelry piece is sent off site to be evaluated by an appraiser who is not a Topazery employee and who has earned the GIA Graduate Gemologist diploma as well as the title of AGS Certified Gemologist Appraiser. The gemologist/appraiser's report is included on the Detail Page for each jewelry piece.

An appraisal is not included with your purchase but we are pleased to provide one upon request at the time of purchase and for an additional fee. The appraiser bases the value for the jewelry on the range of prices prevailing in the most common and appropriate retail markets on the date the appraisal is completed.

Diamonds, pearls and colored gemstones are graded by the grading standards as taught by the Gemological Institute of America (GIA). All measurements and carat weights are approximate, unless otherwise noted, and are determined without removing the stones from the mounting.

The process of determining when a jewelry piece is made and the period it belongs to is not an exact science. The

determination is based on design, materials, hallmarks, signatures, and the manufacturing method. Circa dates and period assignments are made to the best of our abilities.

All pearls are cultured unless noted as natural. All gemstones have been treated by accepted industry standards unless noted otherwise.

Platinum refers to all metals in the platinum family and the alloys which are mixed with it -- palladium, platinum/iridium, and platinum/ruthenium and platinum/cobalt. A non-destructive acid scratch test is used to verify the metal in each jewelry piece. A refractometer is used to test gemstones.

Computer monitors show colors differently; please keep in mind that the actual colors in a jewelry piece may be different from the colors displayed in the website photos.

Jewelry photographs are enlarged to show details. To help you determine if a jewelry piece is appropriate in terms of actual proportions that suit your style as well as the statement you want to make, we provide detailed measurements of the piece.

Rings are photographed on a mannequin's hand in a glove size 6. Rings in sizes from 5.0 or smaller are photographed on a mannequin's hand in a glove size of 5.0.

Each antique and vintage jewelry piece has been pre-owned and expertly restored unless otherwise noted under "Condition".

For special ring orders as well as antique style and vintage inspired rings which are new, the diamond and gemstone carat weight, color, clarity, gram weight, as well as other jewelry details may vary from the website specifications.

©Copyright 2001 - 2020

Topazery, LLC

Atlanta, GA, USA

®Topazery is a Registered Trademark