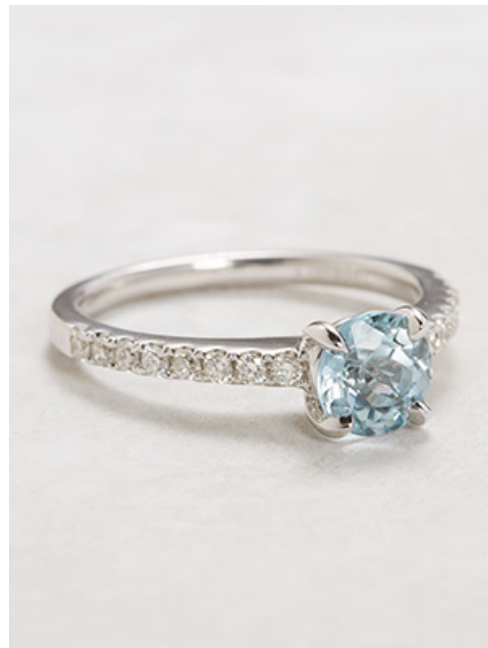




### Aquamarine Bridal Rings Set, RG-3624

This matching aquamarine engagement ring and diamond wedding band combo embraces the finger in non-stop sparkle. Matching diamonds half encircle the bands of this bridal rings set. The engagement ring is accented with an aquamarine solitaire at its center. The wedding band rests snugly atop the engagement ring. A white gold setting adds to the icy radiance of this matched pair. Details: Antique style (new). 18k white gold. Round brilliant cut diamonds; 0.60 carats. Round aquamarine; 1.02 carats.





Options	None
Item #	rg3624
Metal	18k white gold
Weight in grams	4.99
Special characteristics	This is a two piece bridal set with an engagement ring and matching wedding band.
Condition	New
Diamond cut or shape	round brilliant
Diamond carat weight	0.60
Diamond mm measurements	1.5 - 1.6

Diamond color	G - I
Diamond clarity	VS1 - SI2
Diamond # of stones	33
Gemstone name	Beryl (Aquamarine)
Gemstone cut or shape	round
Gemstone carat weight	1.02
Gemstone mm measurements	6.04 - 6.11 x 4.3 mm
Gemstone type	Type I
Gemstone clarity	VVS
Gemstone hue	greenish Blue
Gemstone tone	3-Light
Gemstone saturation	2-Slightly Grayish
Gemstone # of stones	1
Top of ring length (N-S)	6.0 mm [0.23 in]
Top of ring width (E-W)	6.3 mm [0.25 in]
Width of shank at shoulders	3.52 mm [0.14 in]
Width of shank at base	3.49 mm [0.14 in]
Ring height above finger	7.13 mm [0.28 in]
Other ring info	stamped 18k, Topazery
Ring Size	6.0

### Important Jewelry Information

Each antique and vintage jewelry piece is sent off site to be evaluated by an appraiser who is not a Topazery employee and who has earned the GIA Graduate Gemologist diploma as well as the title of AGS Certified Gemologist Appraiser. The gemologist/appraiser's report is included on the Detail Page for each jewelry piece.

An appraisal is not included with your purchase but we are pleased to provide one upon request at the time of purchase and for an additional fee. The appraiser bases the value for the jewelry on the range of prices prevailing in the most common and appropriate retail markets on the date the appraisal is completed.

Diamonds, pearls and colored gemstones are graded by the grading standards as taught by the Gemological Institute of America (GIA). All measurements and carat weights are approximate, unless otherwise noted, and are determined without removing the stones from the mounting.

The process of determining when a jewelry piece is made and the period it belongs to is not an exact science. The determination is based on design, materials, hallmarks, signatures, and the manufacturing method. Circa dates and period assignments are made to the best of our abilities.

All pearls are cultured unless noted as natural. All gemstones have been treated by accepted industry standards unless noted otherwise.

Platinum refers to all metals in the platinum family and the alloys which are mixed with it -- palladium, platinum/iridium, and platinum/ruthenium and platinum/cobalt. A non-destructive acid scratch test is used to verify the metal in each jewelry piece. A refractometer is used to test gemstones.

Computer monitors show colors differently; please keep in mind that the actual colors in a jewelry piece may be different from the colors displayed in the website photos.

Jewelry photographs are enlarged to show details. To help you determine if a jewelry piece is appropriate in terms of actual proportions that suit your style as well as the statement you want to make, we provide detailed measurements of the piece.

Rings are photographed on a mannequin's hand in a glove size 6. Rings in sizes from 5.0 or smaller are photographed on a mannequin's hand in a glove size of 5.0.

Each antique and vintage jewelry piece has been pre-owned and expertly restored unless otherwise noted under "Condition".

For special ring orders as well as antique style and vintage inspired rings which are new, the diamond and gemstone carat weight, color, clarity, gram weight, as well as other jewelry details may vary from the website specifications.

©Copyright 2001 - 2020

Topazery, LLC

Atlanta, GA, USA

®Topazery is a Registered Trademark