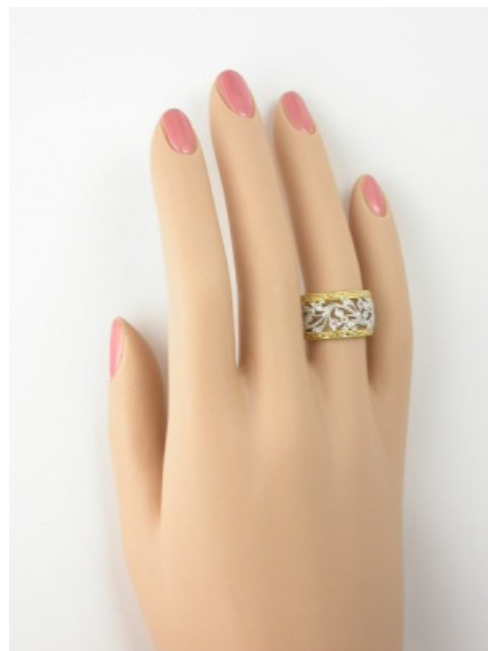




Art Nouveau Antique Style Wedding Ring, RG-1272

Climbing roses of petal pink and gold spring to mind as you slip on this Art Nouveau antique style wedding ring. The two-tone band of this Art Nouveau wedding ring is constructed of 18k white and yellow gold. The vine-patterned cutwork of this wedding ring's band is encrusted with pink and yellow sapphires as well as diamonds. The diamonds total approximately 0.15 carats and the gemstones total approximately 0.20 carats. This is a new wedding ring in the Art Nouveau style.



| | |
|----------------------------|--|
| Options | None |
| Item # | rg1272 |
| Metal | 18k white and yellow gold |
| Circa | New |
| Weight in grams | 7.9 |
| Period or Style | Art Nouveau Antique Style |
| Special characteristics | By jewelry designer Carl Blackburn. |
| Total diamond weight | .15 carats approx. |
| Diamond clarity and color | SI1-SI2, H-I |
| Total gemstone weight | Pink sapphires weight approx. .10 carats, yellow sapphires weight approx. .10 carats |
| MM width for wedding bands | 11.40 mm [0.44 in] |
| Other ring info | This ring is available by special order. Please allow 8-10 weeks for delivery. |

Important Jewelry Information

Each antique and vintage jewelry piece is sent off site to be evaluated by an appraiser who is not a Topazery employee and who has earned the GIA Graduate Gemologist diploma as well as the title of AGS Certified Gemologist Appraiser. The gemologist/appraiser's report is included on the Detail Page for each jewelry piece.

An appraisal is not included with your purchase but we are pleased to provide one upon request at the time of purchase and for an additional fee. The appraiser bases the value for the jewelry on the range of prices prevailing in the most common and appropriate retail markets on the date the appraisal is completed.

Diamonds, pearls and colored gemstones are graded by the grading standards as taught by the Gemological Institute of America (GIA). All measurements and carat weights are approximate, unless otherwise noted, and are determined without removing the stones from the mounting.

The process of determining when a jewelry piece is made and the period it belongs to is not an exact science. The determination is based on design, materials, hallmarks, signatures, and the manufacturing method. Circa dates and period assignments are made to the best of our abilities.

All pearls are cultured unless noted as natural. All gemstones have been treated by accepted industry standards unless noted otherwise.

Platinum refers to all metals in the platinum family and the alloys which are mixed with it -- palladium, platinum/iridium, and platinum/ruthenium and platinum/cobalt. A non-destructive acid scratch test is used to verify the metal in each jewelry piece. A refractometer is used to test gemstones.

Computer monitors show colors differently; please keep in mind that the actual colors in a jewelry piece may be different from the colors displayed in the website photos.

Jewelry photographs are enlarged to show details. To help you determine if a jewelry piece is appropriate in terms of actual

proportions that suit your style as well as the statement you want to make, we provide detailed measurements of the piece.

Rings are photographed on a mannequin's hand in a glove size 6. Rings in sizes from 5.0 or smaller are photographed on a mannequin's hand in a glove size of 5.0.

Each antique and vintage jewelry piece has been pre-owned and expertly restored unless otherwise noted under "Condition".

For special ring orders as well as antique style and vintage inspired rings which are new, the diamond and gemstone carat weight, color, clarity, gram weight, as well as other jewelry details may vary from the website specifications.

©Copyright 2001 - 2025

Topazery, LLC

Atlanta, GA, USA

®Topazery is a Registered Trademark