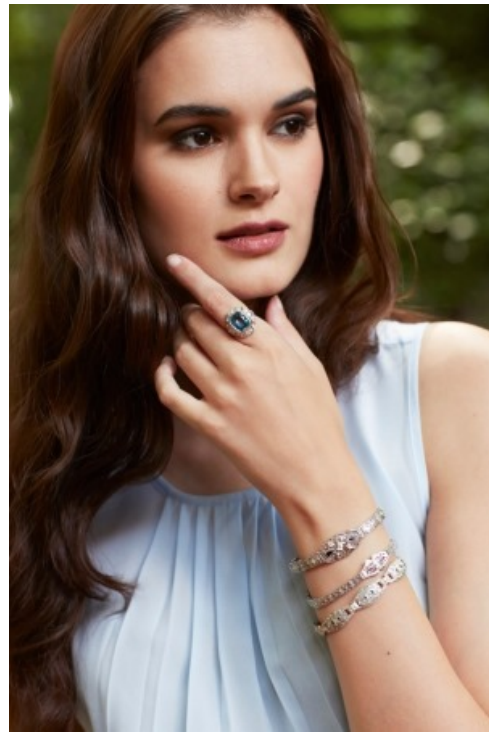




Filigree Sapphire and Diamond Vintage Bracelet, BR-3504

Angelic arcs of diamond brilliance radiate from the center of this hand-wrought vintage bracelet. A single cut diamond that is flanked by a pair of step cut blue sapphires is the focus of attention in each ethereal link of this vintage bracelet. An additional forty-two old-style rose and table cut diamonds add shimmer to the bracelet's rainbow and shooting star elements. All the diamonds combined weigh 0.35 carats. This vintage bracelet is hand-wrought. Circa 1950





Item #	br3504
Metal	18k white and yellow gold
Circa	1950
Weight in grams	20.45
Special characteristics	Hand wrought
Condition	Excellent
Diamond cut or shape	single cut
Diamond carat weight	0.16
Diamond mm measurements	1.7 - 1.8
Diamond color	H
Diamond clarity	VS1 - SI2
Diamond # of stones	7
Diamond2 cut or shape	table and rose
Diamond2 carat weight	0.19
Diamond2 mm measurements	1.2 - 1.4
Diamond2 color	F - H
Diamond2 clarity	VS1 - I1
Diamond2 # of stones	42
Gemstone name	Synthetic Corundum (Flame Fusion)
Gemstone cut or shape	step cut

Gemstone mm measurements	2.5 x 1.5 to 2.6 x 1.4
Gemstone hue	very very slightly violet Blue
Gemstone tone	5-Medium
Gemstone saturation	4 - 5
Gemstone # of stones	14
Length	180 mm [7.02 in]
Width of widest point	11 mm [0.43 in]
Other bracelet info	The bracelet has 7 links. Each link is 4.2mm thick.

Important Jewelry Information

Each antique and vintage jewelry piece is sent off site to be evaluated by an appraiser who is not a Topazery employee and who has earned the GIA Graduate Gemologist diploma as well as the title of AGS Certified Gemologist Appraiser. The gemologist/appraiser's report is included on the Detail Page for each jewelry piece.

An appraisal is not included with your purchase but we are pleased to provide one upon request at the time of purchase and for an additional fee. The appraiser bases the value for the jewelry on the range of prices prevailing in the most common and appropriate retail markets on the date the appraisal is completed.

Diamonds, pearls and colored gemstones are graded by the grading standards as taught by the Gemological Institute of America (GIA). All measurements and carat weights are approximate, unless otherwise noted, and are determined without removing the stones from the mounting.

The process of determining when a jewelry piece is made and the period it belongs to is not an exact science. The determination is based on design, materials, hallmarks, signatures, and the manufacturing method. Circa dates and period assignments are made to the best of our abilities.

All pearls are cultured unless noted as natural. All gemstones have been treated by accepted industry standards unless noted otherwise.

Platinum refers to all metals in the platinum family and the alloys which are mixed with it -- palladium, platinum/iridium, and platinum/ruthenium and platinum/cobalt. A non-destructive acid scratch test is used to verify the metal in each jewelry piece. A refractometer is used to test gemstones.

Computer monitors show colors differently; please keep in mind that the actual colors in a jewelry piece may be different from the colors displayed in the website photos.

Jewelry photographs are enlarged to show details. To help you determine if a jewelry piece is appropriate in terms of actual proportions that suit your style as well as the statement you want to make, we provide detailed measurements of the piece.

Rings are photographed on a mannequin's hand in a glove size 6. Rings in sizes from 5.0 or smaller are photographed on a mannequin's hand in a glove size of 5.0.

Each antique and vintage jewelry piece has been pre-owned and expertly restored unless otherwise noted under "Condition".

For special ring orders as well as antique style and vintage inspired rings which are new, the diamond and gemstone carat weight, color, clarity, gram weight, as well as other jewelry details may vary from the website specifications.

©Copyright 2001 - 2025

Topazery, LLC

Atlanta, GA, USA

®Topazery is a Registered Trademark