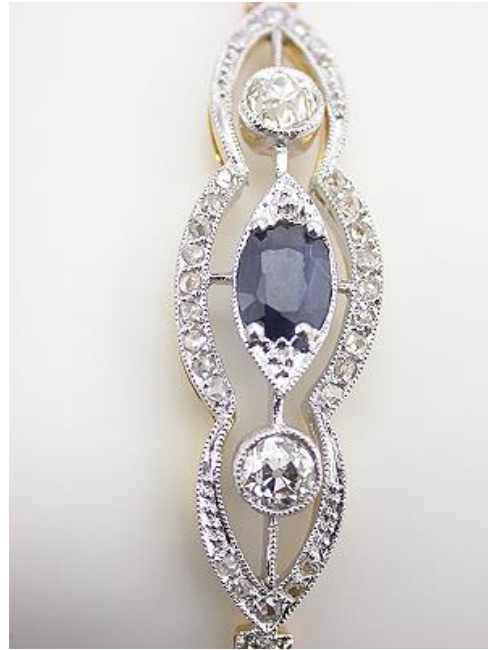




### Edwardian Sapphire and Diamond Antique Bracelet, BR-3039

Add an elegant touch to your wrist with this dreamy Edwardian bracelet. The 14k yellow gold bangle is clad in platinum at the top. Here, the metallic elements come together in an hourglass design. A collection of 32 old European, old style single and rose cut diamonds add 0.69 carats of shimmer. In the center of this Edwardian bracelet is an oval faceted mixed cut blue sapphire that weighs 0.64 carats. Circa 1915 or later





Item #	br3039
Metal	Platinum on 14 karat yellow gold
Circa	1915 or after
Weight in grams	9.96
Period or Style	Edwardian
Condition	Excellent
Diamond cut or shape	Old European cut
Diamond carat weight	0.23
Diamond mm measurements	3.8 x 2.45
Diamond color	I
Diamond clarity	VS1
Diamond # of stones	1
Diamond2 cut or shape	Old European cut
Diamond2 carat weight	0.24
Diamond2 mm measurements	3.7 x 2.80
Diamond2 color	J
Diamond2 clarity	VS1
Diamond2 # of stones	1
Diamond3 cut or shape	Old Style Single Cut
Diamond3 carat weight	0.07
Diamond3 mm measurements	1.9 x 1.7 and 2.1 x 1.7

Diamond <sub>3</sub> color	H
Diamond <sub>3</sub> clarity	VS <sub>2</sub> - I <sub>1</sub>
Diamond <sub>3</sub> # of stones	2
Diamond <sub>4</sub> cut or shape	Rose Cut
Diamond <sub>4</sub> carat weight	0.15
Diamond <sub>4</sub> mm measurements	0.7 - 1.4
Diamond <sub>4</sub> color	E - H
Diamond <sub>4</sub> clarity	VS <sub>2</sub> -I <sub>1</sub>
Diamond <sub>4</sub> # of stones	28
All Diamonds, total ct. wt.	0.69
Gemstone name	Sapphire
Gemstone cut or shape	Oval faceted mixed cut
Gemstone carat weight	0.64
Gemstone mm measurements	6.0 x 4.5 x 2.87
Gemstone type	Type II
Gemstone clarity	SI <sub>1</sub>
Gemstone hue	Very Slightly Violetish Blue
Gemstone tone	6-Medium Dark to 7 Dark
Gemstone saturation	6-Vivid
Gemstone # of stones	1
Length	37.5 (top trim) mm [1.46 in]
Width of widest point	10.50 mm [0.41 in]
Other bracelet info	hinged bangle design, box clasp with gate safety latch; inside measurements are approximately 2 1/4 inches by 1 3/4 inches.

### Important Jewelry Information

Each antique and vintage jewelry piece is sent off site to be evaluated by an appraiser who is not a Topazery employee and who has earned the GIA Graduate Gemologist diploma as well as the title of AGS Certified Gemologist Appraiser. The gemologist/appraiser's report is included on the Detail Page for each jewelry piece.

An appraisal is not included with your purchase but we are pleased to provide one upon request at the time of purchase and for an additional fee. The appraiser bases the value for the jewelry on the range of prices prevailing in the most common and appropriate retail markets on the date the appraisal is completed.

Diamonds, pearls and colored gemstones are graded by the grading standards as taught by the Gemological Institute of America (GIA). All measurements and carat weights are approximate, unless otherwise noted, and are determined without removing the stones from the mounting.

The process of determining when a jewelry piece is made and the period it belongs to is not an exact science. The determination is based on design, materials, hallmarks, signatures, and the manufacturing method. Circa dates and period assignments are made to the best of our abilities.

All pearls are cultured unless noted as natural. All gemstones have been treated by accepted industry standards unless noted otherwise.

Platinum refers to all metals in the platinum family and the alloys which are mixed with it -- palladium, platinum/iridium, and platinum/ruthenium and platinum/cobalt. A non-destructive acid scratch test is used to verify the metal in each jewelry piece. A refractometer is used to test gemstones.

Computer monitors show colors differently; please keep in mind that the actual colors in a jewelry piece may be different from the colors displayed in the website photos.

Jewelry photographs are enlarged to show details. To help you determine if a jewelry piece is appropriate in terms of actual proportions that suit your style as well as the statement you want to make, we provide detailed measurements of the piece.

Rings are photographed on a mannequin's hand in a glove size 6. Rings in sizes from 5.0 or smaller are photographed on a mannequin's hand in a glove size of 5.0.

Each antique and vintage jewelry piece has been pre-owned and expertly restored unless otherwise noted under "Condition".

For special ring orders as well as antique style and vintage inspired rings which are new, the diamond and gemstone carat weight, color, clarity, gram weight, as well as other jewelry details may vary from the website specifications.

©Copyright 2001 - 2024

Topazery, LLC

Atlanta, GA, USA

®Topazery is a Registered Trademark